

TV&W Nurse Retention Survey 25/26

The South West, Thames Valley & Wessex and Kent, Surrey & Sussex Adult Critical Care Networks

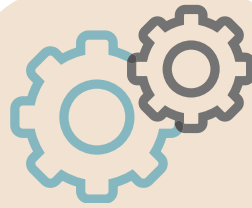
Responses



459



42% often or
always look
forward to
going to work



59% are often
or always
enthusiastic
about their job



69% reported
that time
passes quickly
when they are
working

56%
of nurses feel they have
a high level of stress as a
result of their work

Contributing to Stress?

- 1** Staff Shortages
(55%)
- 2** Work-life balance
(36%)
- 3** Being asked to work
on another ward
(35%)

What's important to you? Do you feel you are getting these?

Important

98%	Positive impact on Patient Care	88%
97%	Positive relationships with colleagues	84%
97%	Work-life balance	49%

Getting



48% of nurses are
expecting to
leave their current
ICU in the
next 3 years

Why?

- 1** Being Asked to work on other
wards* (**45%**)
- 2** Lack of recognition through pay
awards (**44%**)
- 3** High workload (**37%**)

Where?

Out of those
expecting to
leave
24%
are planning to
leave the NHS

Would you recommend ICU Nursing
as a career to other nurses?



71% said yes

For more information please email: england.tv-w-criticalcarenetwork@nhs.net